

**α**  
**ALFA ELECTRONICS**

**Product Acknowledgment**

Customer Name: \_\_\_\_\_

Specification model: SP-AIDF4050E(6KV)

Date: \_\_\_\_\_

Edit	Audit	Approval	Customer Confirmation

**Address :**

Sr.No. 37/3, Ajinkyatara Industrial Estate, Vadgaon Khurd, Sinhagad Road, Pune - 411041.

**Email :** [asmita@alfaelectronicsindia.com](mailto:asmita@alfaelectronicsindia.com) / [info@alfaelectronicsindia.com](mailto:info@alfaelectronicsindia.com)

**Contact :** +91 9623449905 / 9623002706 / 9850005320

## ● Description:

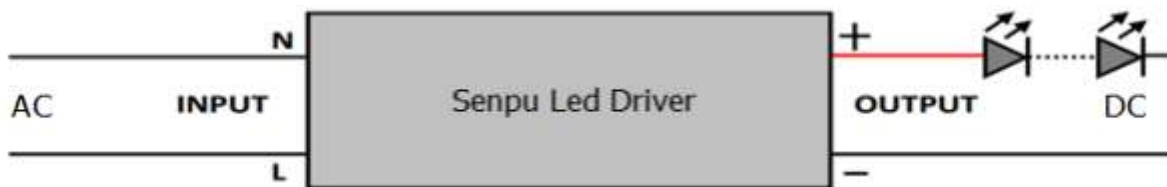
- All protected model half aluminum housing, meet IP65 rating
- Protection type: open circuit, short circuit, overload
- Natural air cooling
- 100% full load aging test
- Low cost/high reliability
- Warranty period: 5 years

Input characteristic	
Input voltage and frequency	110-300V 50/60hz
Input current	260ma $\sqrt{AC220V}$ $\sqrt{A}$
Power factor	0.97
Efficiency	90.5%
Total harmonic content $\sqrt{THD}$ $\sqrt{A}$	>7%
Output characteristic	
Output voltage	26-40V
Output current	1400ma $\pm 5\%$
Output current range	1200-1500MA
Floating voltage	52V $\pm 1V$
Precision of constant current	3%
Turn on Delay Time	0.6S
Ripple percentage	<20%

<b>Protection</b>	
No-load protection	When driver no-load can work normally
Input overvoltage protection	When the driver input at 300V, the power will stop working. When the driver input is below, 110V, the diver will be protection condition.
Lightning surge protection	L-N 6KVA
Overload protection	The working voltage of the light source is beyond the scope of the output power, light blinking (burp protection)
Short-circuit protection	When the output short circuit, the power will protect, reduce the input power to milliwatts. The output separately power automatic working
<b>Work environment requirements</b>	
Working temperature/ humidity requirements	-40°C to +65°C 10%RH to 100%RH
Storage temperature/ humidity requirements	20°C to +85°C 5%RH to 100%RH
Work surface temperature	Driver surface temperature < 85°C
<b>Safety standard and electromagnetic compatibility</b>	
Certification mark	R-41074861
Certification standard	
Electromagnetic compatibility	Not Applicable
Withstand voltage	3800V/5S
<b>Others</b>	
Overall dimensions	116MM*36MM*28MM Error range < 1MM
<b>Remark</b>	
<b>1: This product has the function of constant current, can maximum limit to protect the light is not affected by the driver itself overshoot current</b>	
<b>2: The product output and completely isolated grid, the output voltage is safe.</b>	

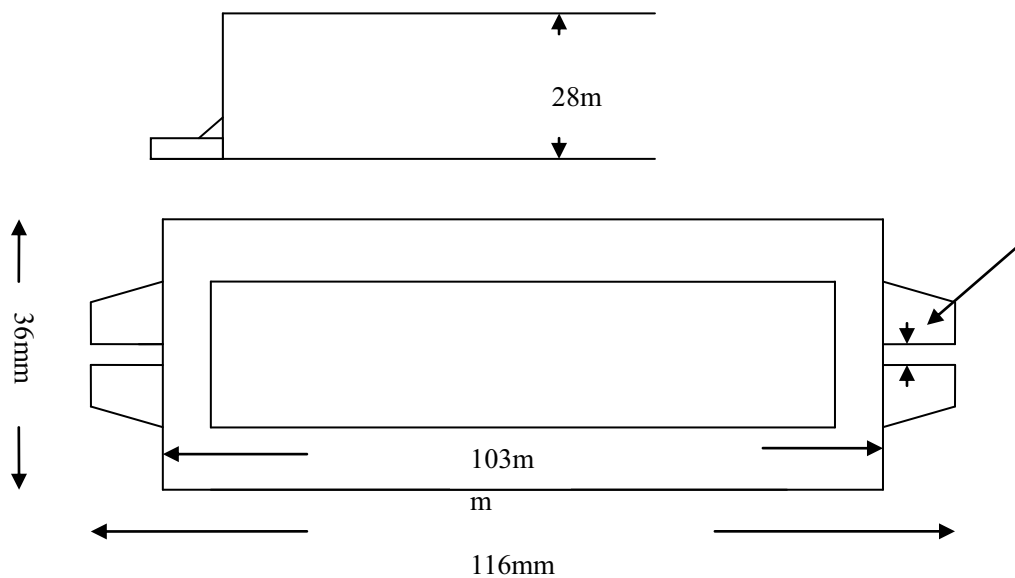
● **Nameplate:**

● **Wiring diagram:**



● **Installation size picture:**

5mm



**\*End\***

picture show

